

# Aficio® 2035e/2045e

**Streamlining Document Management,  
Optimizing Productivity**



**RICOH®**

# The One Document Solution For All Your Business Demands

# 2035e/2045e

In today's growing offices and fast-paced workgroups, efficient document management is vital to streamlining workflow, enhancing productivity and optimizing your bottom line. The advanced yet compact RICOH Aficio® 2035e/2045e digital imaging systems provide all the power and flexibility you need to seamlessly create, manage, finish and distribute your documents...more swiftly and affordably than ever.

The Aficio 2035e/2045e not only produce consistently crisp images whether you're copying, printing or scanning, but let you move easily between tasks. Professionalize multi-page documents with three finishing options (stapling, hole punching or saddle-stitching), or scan them into memory for electronic distribution. Maximize versatility with the Fax option to send and receive hardcopy or paperless faxes.



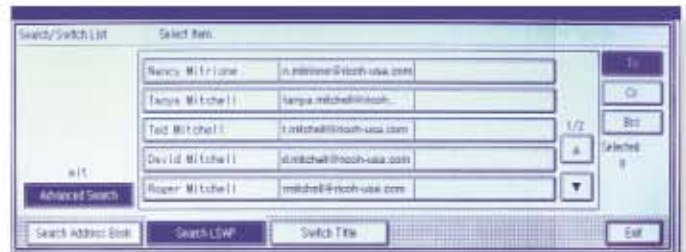
## Swift, Server-less Scanning

Securely storing documents is a breeze with the network scanning capabilities of the Aficio 2035e/2045e. Embedded scanning that easily integrates with your existing intranet and Internet technology also facilitates state-of-the-art electronic document delivery - with no server or software installation required!



▲ Enter external e-mail addresses utilizing the system's soft keypad.

A wide array of industry standard file formats such as TIFF, TIFF-F, Multipage TIFF, PDF and JPEG streamline communication between PCs. Plus, the Aficio 2035e/2045e enable secure delivery of up to 2 GB files to any shared Windows® folder or FTP server.

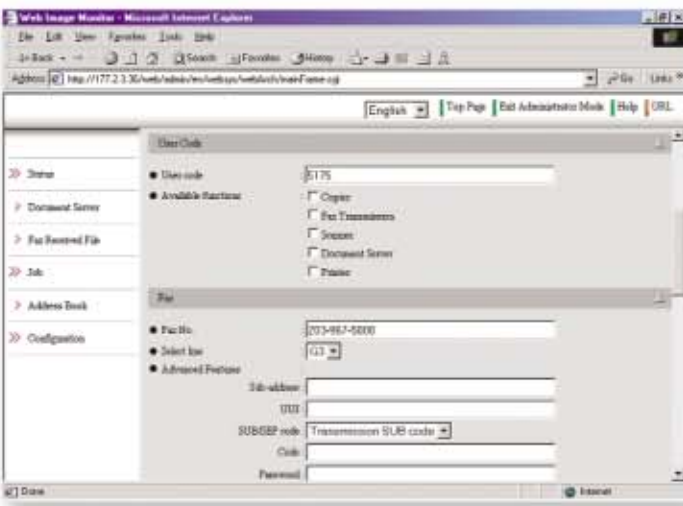
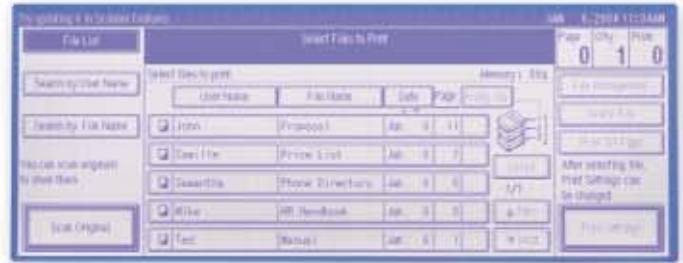


▲ Use LDAP technology to search your company's e-mail address book

- Embedded Scan to E-mail with Lightweight Directory Access Protocol (LDAP).
- SMTP Authentication and POP Before SMTP Authentication.
- Enter and access up to 2,000 e-mail addresses right at the LCD touch panel display.
- Input e-mail subject, file name and destination for each job.
- Select resolution and image density.

## Efficient, Effortless Document Management

The Aficio 2035e/2045e give you total control over document input, management and output, all in one central "control station." Once documents are stored in the systems' standard 20GB Document Server, you can retrieve, view and manage all electronically-generated or paper-based originals from the control panel or your desktop.



▲ Effectively manage documents and various settings from any connected PC via a standard Web Browser.

Without any additional software, you can...

- Quickly search for documents by file or user name.
- Print, fax, re-scan, e-mail or download to your computer for editing.
- Select all copier/printer functions, including duplexing and finishing.
- Remotely monitor system status, paper and toner supply.
- Update your address books and fax numbers.
- Designate destination folders and FTP servers for network scan jobs.
- Enable passwords to control various functions

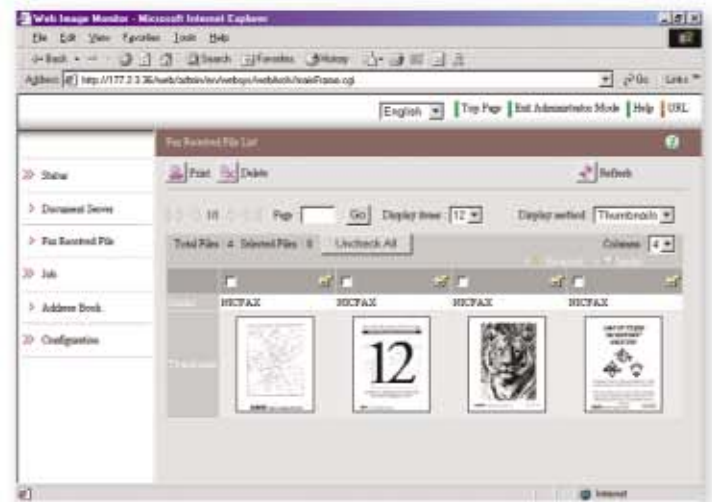
## Paperless-Plus Faxing Capabilities

The Aficio 2035e/2045e provide superior fax functionality (with Fax option) that rivals many high-end standalone systems. Fax traditionally via phone line or add an extra Super G3 line for separate transmission and receiving lines to reduce fax traffic.

You can also LAN-Fax from your desktop. Send hardcopy faxes to as many as 500 recipients, customize cover sheets, import addresses from other LAN-Fax software and fill your address book without re-keying. Before sending, preview documents in the LAN-Fax driver, then check transmission results with Web Image Monitor.

T.37-compliant Internet Faxing revolutionizes fax communication by letting you scan hardcopy documents then fax them over the Internet for delivery in hardcopy form or as a TIFF-F e-mail attachment. Store Internet addresses in the systems' local address book and fax for free to other T.37 Internet fax capable systems.

*Ingenious technology allowing you to "go paperless" by converting or forwarding incoming faxes ▼*



## Superb Digital Copying Capabilities

At the heart of the Aficio 2035e/2045e's productivity-boosting functions lie unparalleled copying versatility, benchmark image quality, and swift 35/45-page-per-minute reproduction. Fast warm-up and first copy times get you working in seconds, and a clearly organized LCD and Control Panel help you access even the most advanced functions with one touch.

The Aficio 2035e/2045e keep output flowing with up to 3,550-sheet paper capacity (dual 500-sheet user-adjustable trays and a 50-sheet bypass tray) enhanced by two optional 500-sheet trays and a 1,500-sheet Large Capacity Tray (LCT).



▲ **Multi-Tray Finisher**  
delivers multi-position  
stapling plus optional  
hole-punching.



▲ **Booklet Finisher**  
completes the  
package with  
commercial-level  
results.



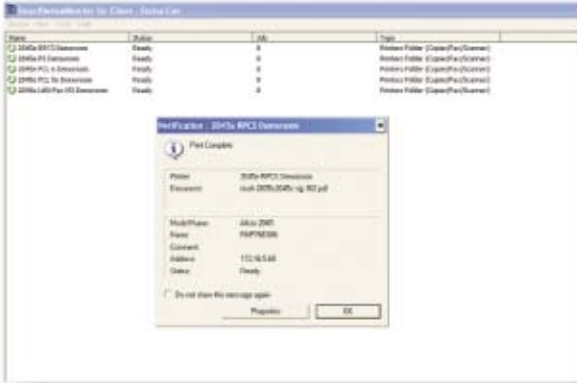
▲ **1,000-sheet Finisher**  
provides offset  
stacking plus 50-sheet  
three-position stapling.

## Print On Demand With Network Connectivity

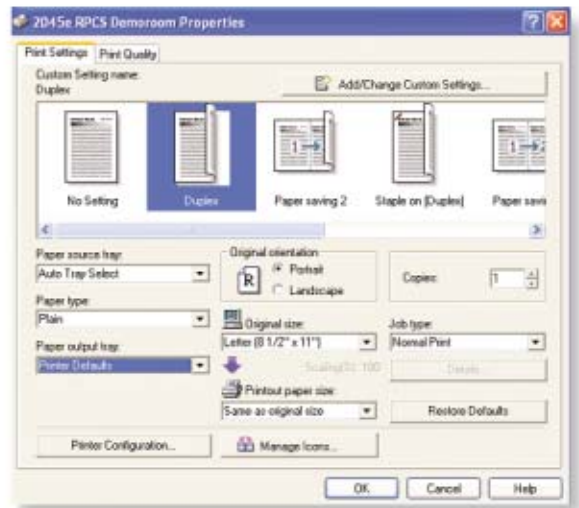
The Aficio 2035e/2045e enhances your document production power with network printing that boasts impressive speed, **crisp 600 x 600 dpi** resolution, plus the same diverse features you've grown used to in a copier, such as duplexing and finishing.

Save different printer settings for specific jobs, storing them under a user-created icon for fast future access.

◀ From any desktop, connected users can manage print jobs as well as the entire system with just the printer's IP address and Ricoh's SmartDeviceMonitor software installed on a networked PC.



**Ricoh's Refined Print Command Stream (RPCS™)**, ▶  
an intuitive icon-based driver,  
makes printing a snap by letting even  
novices pick any job setting or run  
a print job with just one click.



## Protecting Your Work And Your Environment

Document Security. Sensitive and classified documents are easily managed with two valuable security options. With the Removable Hard Drive, you can unlock, remove and store the hard drive in a secure location after processing classified information. Increase security with an extra hard drive to keep classified and unclassified data separate.

The DataOverwriteSecurity System option provides automatic overwriting of the information after each copy or print job. Data is overwritten three times so information cannot be easily retrieved or stolen. This is a cost-effective way to implement security for multi-system environments.



**The Aficio 2035e/2045e...**  
Optimizing Office Productivity With Ultimate  
Document Management Capabilities

## ENVIRONMENTALLY CONSCIOUS

The Energy Star®-compliant Aficio 2035e/2045e are environmentally friendly, and continue Ricoh's longstanding commitment to developing office solutions with superior energy- and supply-saving features, including:

- Quick Start Up (QSU) technology that wakes the system up in 10 seconds from power off
- Power-saving Sleep modes
- Ultra-fast Duplex and Combine Copy modes
- Internal Toner Recycling System
- Low operation noise levels
- Minimal ozone emissions



# Aficio® 2035e/2045e

## SPECIFICATIONS

### Engine/Copier Specifications

<b>Configuration:</b>	Console	
<b>Scanning Element:</b>	Flatbed with Moving CCD Array Image Sensor	
<b>Printing Process:</b>	Twin Laser Beam Scanning & Electrophotographic Printing	
<b>Toner:</b>	Dry, Dual Component	
<b>System Memory (Std./Max.):</b>	64/320MB RAM + 20GB HDD	
<b>Hard Disk Drive:</b>	20GB	
<b>Copy Resolution:</b>	600 x 600 dpi	
<b>Grayscale:</b>	256 Levels	
<b>Exposure Adjustment:</b>	Manual & Automatic	
<b>Quantity Indicator:</b>	1 to 999	
<b>Original Type:</b>	Book/Sheet	
<b>Maximum Original Size:</b>	Up to 11" x 17"	
<b>Copy Size:</b>	5.5" x 8.5" to 11" x 17"	
<b>Copy Type:</b>	Plain Paper, Transparencies	
<b>Warm-Up Time:</b>	Aficio 2035e:	15 seconds
	Aficio 2045e:	20 seconds
<b>First Copy Speed:</b>	Aficio 2035e:	4.5 seconds
	Aficio 2045e:	3.6 seconds
<b>Continuous Copying Speed:</b>	Aficio 2035e:	35 copies/minute (LTR)
	Aficio 2045e:	45 copies/minute (LTR)
<b>Recovery Time (from Auto Off):</b>	Aficio 2035e:	10 seconds
	Aficio 2045e:	15 seconds
<b>Power Source:</b>	120V/60Hz/15A	
<b>Dimensions (WxDxH):</b>	23.6" x 25.6" x 32.3" (670 x 650 x 870mm)	
<b>Weight:</b>	200 lb. (91.0kg)	
<b>Standard Paper Capacity:</b>	500 sheets x 2 trays 50-sheet Bypass tray	
<b>Optional Paper Capacity:</b>	500 sheets x 2 trays 1,500-sheet Large Capacity Tray (LCT)	
<b>Paper Size:</b>	5.5" x 8.5" to 11" x 17"	
<b>Paper Weight:</b>	16 to 28 lb. Bond/60 to 105g/m <sup>2</sup> (Trays 1,2) 16 to 44 lb. Bond/60 to 163g/m <sup>2</sup> (Bypass) 16 to 28 lb. Bond/60 to 105 g/m <sup>2</sup> (Duplex)	
<b>Reduction Ratios:</b>	25%, 50%, 65%, 73%, 78%, 85%, 93%	
<b>Enlargement Ratios:</b>	121%, 129%, 155%, 200%, 400%	
<b>Zoom:</b>	25% to 400% in 1% increments	

### Printer Specifications \*

<b>Print Speed:</b>	Aficio 2035e:	35 ppm
	Aficio 2045e:	45 ppm
<b>CPU:</b>	RM7065A 300 MHz	
<b>Standard Interfaces:</b>	10Base-T/100Base-TX, IEEE 1284 Parallel	
<b>Optional Interfaces:</b>	IEEE 802.11b Wireless LAN	Bluetooth
	IEEE 1394	USB 2.0
<b>Network Protocol:</b>	TCP/IP, IPX/SPX, SMB, AppleTalk	
<b>Utilities:</b>	SmartDeviceMonitor, Web Image Monitor and DesktopBinder V2 Lite	
<b>Page Description Languages:</b>	PCL 5e/6 emulation Ricoh RPCS Adobe PostScript3 (optional)	
<b>Print Resolution:</b>	PCL 5e/6: 300 dpi, 600 dpi PS3: 300 dpi, 600 dpi RPCS: 200 dpi, 300 dpi, 600 dpi	
<b>Grayscale:</b>	256 Levels	
<b>Fonts for PCL 5e/6:</b>	35 Intellifonts, 10 TrueType Fonts, 1 Bitmap	
<b>Fonts for PS3:</b>	136 PostScript Fonts	
<b>Drivers for PCL 5e/6, RPCS:</b>	Windows 9x, Me, NT4.0, 2000, XP	
<b>Drivers for PS3:</b>	Windows 9x, Me, NT4.0, 2000, XP Macintosh 8.6 - OS X	

### Scanner Specifications \*

<b>Scanning Speed:</b>	52 ipm (@200 dpi) 36 ipm (@200 dpi) (TWAIN)
<b>Scanning Resolution:</b>	600 dpi
<b>Grayscale:</b>	256 Levels
<b>Scan Area:</b>	11" x 17"
<b>Interface:</b>	10Base-T/100Base-TX IEEE 1394 (optional) IEEE 802.11b Wireless LAN (optional)
<b>Protocol:</b>	TCP/IP, SMTP, SMB, FTP
<b>Memory Capacity (std./max.):</b>	192MB/320MB+20GB HDD
<b>Software Driver:</b>	ScanRouter, TWAIN

### Fax Specifications \*

<b>Circuit:</b>	PSTN, PBX
<b>Number of Lines:</b>	One standard, maximum of three with options
<b>Compatibility:</b>	ITU-T (ITU) G3, Internet Fax T.37
<b>Resolution:</b>	200 x 200/100 dpi 400 x 400 dpi (optional)
<b>Compression Method:</b>	MH, MR, MMR JBIG (optional)
<b>Scanning Speed:</b>	0.30 seconds (LEF)
<b>Modem Speed:</b>	33.6 Kbps with Auto Fallback
<b>Transmission Speed:</b>	G3: 3.0 seconds per page (without JBIG) G3: 2.0 seconds per page (with JBIG)
<b>Memory:</b>	4MB standard, 28MB maximum
<b>Memory Backup:</b>	1 hour
<b>Quick/Speed Dials:</b>	500 std. (up to 1,200 or 2,000 with option)

<b>Group Dials:</b>	100 (max. 500 numbers per group)
<b>ID Code Programming:</b>	8 digits
<b>User Function Key:</b>	4 keys
<b>Auto Document:</b>	6 documents (18 documents with optional memory)
<b>User Codes:</b>	100 (500 with optional memory)

### PS530 Paper Bank \*

<b>Paper Size:</b>	5.5" x 8.5" to 11" x 17"/A5 to A3
<b>Paper Weight:</b>	16 to 28 lb. Bond/60 to 105 g/m <sup>2</sup>
<b>Paper Capacity:</b>	2 x 500 sheets

### Large Capacity Tray LCT \*

<b>Paper Size:</b>	8.5" x 11"/A4
<b>Paper Weight:</b>	16 to 28 lb. Bond/60 to 105 g/m <sup>2</sup>
<b>Paper Capacity:</b>	1,500 sheets

### One Bin Tray \*

<b>Paper Size:</b>	5.5" x 8.5" to 11" x 17"/A5 to A3
<b>Paper Weight:</b>	16 to 28 lb. Bond/60 to 105 g/m <sup>2</sup>
<b>Paper Capacity:</b>	125 sheets

### SR790 Finisher 1000 \*

<b>Paper Size:</b>	5.5" x 8.5" to 11" x 17"/A6 to A3
<b>Paper Weight:</b>	16 to 42 lb. Bond/55 to 157 g/m <sup>2</sup>
<b>Stack Capacity:</b>	Proof Tray: 250 sheets Shift Tray: 1,000 sheets (8.5" x 11" or smaller) 500 sheets (8.5" x 14" or larger)
<b>Staple Capacity:</b>	50 sheets (8.5" x 11" or smaller) 30 sheets (8.5" x 14" or larger)
<b>Staple Position:</b>	4 positions (1 staple/2 positions; 2 staples/2 positions)

### SR880 Multi-Tray Finisher \*

<b>Paper Size:</b>	5.5" x 8.5" to 11" x 17"/A6 to A3	
<b>Paper Weight:</b>	14 to 43 lb. Bond/52 to 163 g/m <sup>2</sup>	
<b>Stack Capacity:</b>	Upper Tray: 500 sheets	Lower Tray: 2,000 sheets
<b>Staple Capacity:</b>	50 sheets (8.5" x 11" or smaller) 30 sheets (8.5" x 14" or larger)	
<b>Staple Position:</b>	4 positions (1 staple/3 positions; 2 staples/1 position)	

### SR890 Booklet Finisher \*

<b>Paper Size:</b>	5.5" x 8.5" to 11" x 17"/A5 to A3	
<b>Paper Weight:</b>	14 to 43 lb. Bond/52 to 163 g/m <sup>2</sup>	
<b>Stack Capacity:</b>	50 sheets (8.5" x 11" or smaller) 30 sheets (8.5" x 14" or larger)	
<b>Booklet Tray Capacity:</b>	10 sets (11 to 15 sheets) 15 sets (6 to 10 sheets) 25 sets (less than 5 sheets)	
<b>Booklet Staple Capacity:</b>	15 sheets	
<b>Booklet Staple Position:</b>	4 positions (1 staple/2 positions; 2 staples/2 positions; plus saddle stitch)	

### 2/3 Hole Punch Kit \*

<b>Paper Weight:</b>	14 to 43 lb. Bond/52 to 163 g/m <sup>2</sup>
<b>Application:</b>	For SR880 Multi-Tray Finisher only

### Type 2045S/P Kit \*

### Adobe PostScript 3 \*

### IEEE 1394 Interface Board Type 4510 \*

<b>Included Cables:</b>	2.0m 6-pin to 6-pin cable 2.0m 6-pin to 4-pin cable
<b>Hardware Specifications:</b>	6 pins; 2 ports available
<b>Data Transmissions Speeds:</b>	400/200/100 Mbps
<b>System Requirements:</b>	Windows Professional/Server with Service Pack 1; Windows XP for IP over IEEE 1394 (TCP/IP protocol)

### USB 2.0 Interface Board Type A \*

<b>Data Transmissions Speeds:</b>	480 Mbps (USB 2.0) 12 Mbps (Full speed mode)
<b>Supported OS:</b>	USB 1.1: Windows 98SE/2000/Me/XP Mac OS 9.x/X classic mode USB 2.0: Windows XP/2000

### IEEE 802.11b Wireless LAN Interface \*

<b>Data Transmissions Speeds:</b>	1/2/5/11 Mbps
<b>Protocol:</b>	TCP/IP, IPX/SPX, SMB AppleTalk
<b>Connection Types:</b>	Ad Hoc mode Infrastructure mode
<b>Distance Between Devices:</b>	151 to 1,300 feet (140 to 400 meters)

### Bluetooth Interface Type 2045 \*

<b>Data Transmissions Speeds:</b>	1 Mbps
<b>Supported OS:</b>	Windows XP/2000/98SE/Me (dependent on Bluetooth card)
<b>Distance Between Devices:</b>	33 feet (10 meters)

#### \* Option

Print speed may be affected by network, application or PC performance.  
Specifications and external appearances are subject to change without notice.  
Products are shown with optional features.  
For maximum performance and yield, we recommend using genuine Ricoh parts and supplies.



# RICOH®

## Image Communication

Ricoh Corporation, Five Dedrick Place, West Caldwell, NJ 07006  
Phone: (973) 882-2000 • Web Site: <http://www.ricoh-usa.com>  
© Ricoh Corporation

Printed in U.S.A. on recycled paper because Ricoh cares.

Windows® and Windows 3.1/95/98/Me/NT4.0/2000/XP are registered trademarks of Microsoft Corporation. Macintosh, Mac OS and AppleTalk are registered trademarks of Apple Computer, Inc. Adobe® and PostScript® are trademarks of Adobe Systems, Inc. PCL is a registered trademark of Hewlett-Packard Company. Ricoh® and Aficio® are registered trademarks of Ricoh Company, Ltd. RPCS™ is a trademark of Ricoh Company, Ltd. All other trademarks are the property of their respective owners.